



CASE STUDY



EFFICIENT, CONSISTENT DATA TRACKING TO GUIDE AMBITIOUS CARBON INTENSITY REDUCTION GOALS

As one of the biggest energy players in the Far East, with 5 million customers across China, India, Australia and South East Asia, our client generates 22,000MW of electricity a year through coal and gas, and a mix of renewable energy systems, including wind and solar.

To play its role in helping to stabilize carbon dioxide (CO2) concentrations to keep them below 550 parts per million, the company's goal is to achieve a 75% reduction in its carbon intensity – from where it was in 2007 at 0.84kg of CO2 per kilowatt hour of electricity produced, to 0.2 kg CO2/kwh by 2050.

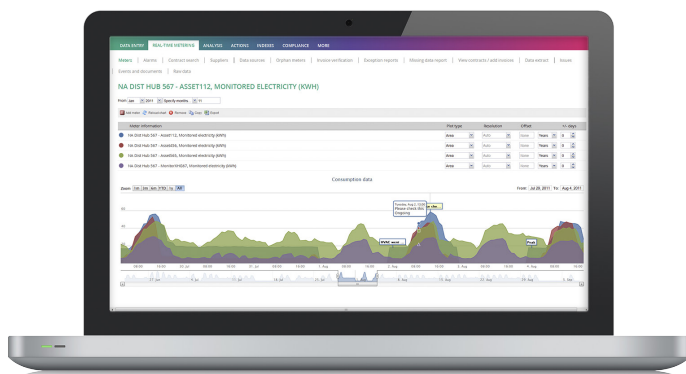
As such, it takes its approach to sustainability disclosure very seriously and is a member of the Hang Seng Corporate Sustainability Index Series, the Dow Jones Sustainability Indices (DJSI) and CDP.

THE CHALLENGE

Achieving its carbon intensity reduction goals demands regular data tracking and disclosure. The business has published environmental

“We’ve always been at the forefront in disclosing our performance and a higher level of transparency is in line with our sustainability commitments. UL EHS Sustainability has helped us to develop a reporting system and format that senior management felt comfortable with. We showed them what we wanted to do, and they created a customized version of their platform that gives us the flow of information and approval process requirements we needed to make it really valuable.”

Senior Manager - Group Environment,
Major energy company, South East Asia



and social impact reports since 2002 and, in 2007, began using a custom-built, intranet system for facilities and business units to report its monthly performance data online.

All Hong Kong listed companies must now include environmental, social and governance (ESG) information as part of the financial reporting commitments; gathering ESG data to report has become much more important.

However, its existing data system was not flexible enough to meet its ambitious goals, ever-growing reporting requirements and the need to supply senior management teams with regularly updated information in an easy to digest format, to understand the performance and generation output of more than 75 different sites.

www.ulehssustainability.com



THE SOLUTION

The internal system was replaced by UL EHS Sustainability's cr360 sustainability platform, a custom built system which is now used by up to 300 people across the business, all inputting their data into one centralized system.

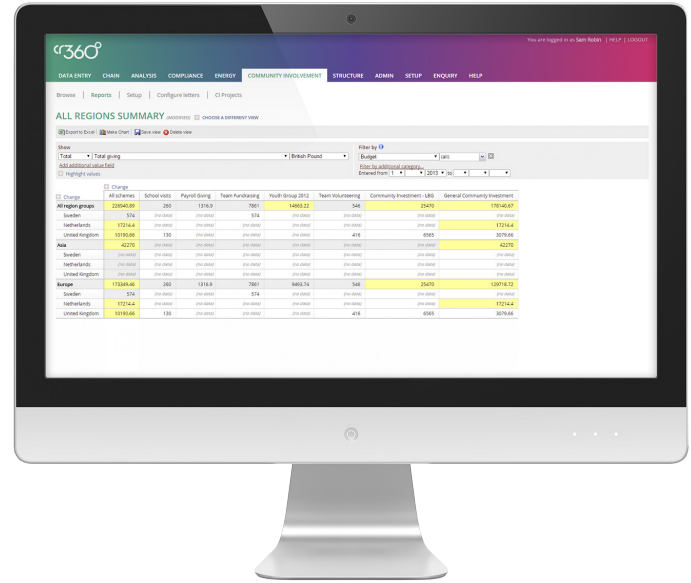
This information can then be used internally – to inform decision-making, address concerns and prioritize actions – plus, externally for global non-financial reporting and disclosure purposes, such as DJSI and CDP.

It also provides a platform to input 'softer' data too, such as community investment which had been notoriously difficult and complicated to trace, especially at year-end.

RESULTS

Thanks to UL EHS Sustainability's ability to tailor the platform to the company's specific needs, it has provided an efficient, time-saving method to collect data from multiple sites and to present it in a coherent and consistent way. When senior managers now ask for weekly updates on site generating capacity, for example, the system can graphically illustrate and present the current performance status of each facility at the touch of a button.

Because the business has made a commitment to only report the numbers it can verify, the system has been crucially important in improving the traceability of all data, identifying who inputted the



data, from which location and at what time. This, in turn, makes auditing the data for external verification much easier. Auditors can be given a guest log-in to access the data and check the numbers.

With an enhanced view of its data, the company is now able to analyze its performance over the short and medium term to identify trends and find ways to improve operational efficiency in the way it delivers energy to its millions of customers.

KEY BENEFITS

- **Improving efficiency in data collection:** With a single way of collecting data from across multiple, geographically diverse facilities, the business now has more complete and consistent data that it can use to improve operational performance.
- **Making data verification simple:** By indicating how datasets were originated – and identifying who, what and where the numbers were inputted – the business can be confident that auditors will have what they need to verify all performance figures, for reporting purposes.
- **Quick, consistent data illustration:** When senior management asks for a weekly snapshot of facility performance, the platform can serve up graphical illustrations at the touch of a button.

www.ulehssustainability.com